



Future Fest 2025

Exhibitor Guide

Friday 14 February 2025

Fire Exit

United Response

Home from Home Care

Mysa Care

Pike Hall

Liaise

Active Care

Royal Hospital Neuro disability

Dolphin

Precious Homes

Seeability

Cream Care

Fonthill

Hamberley

Enham

Treloar Dieticians

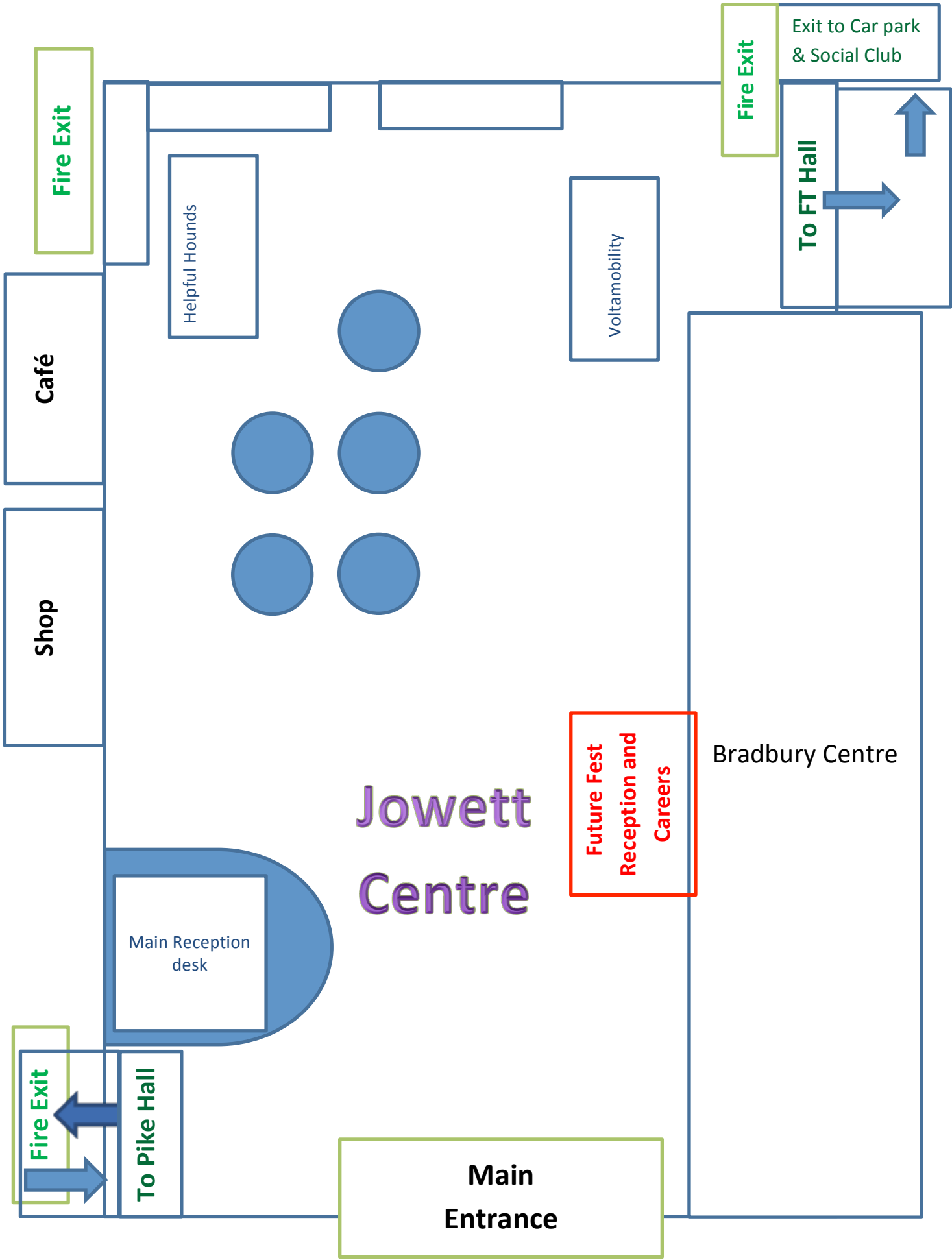
Chailey

County Care

Cygnnet Social Care

Care Tech

Pike Hall



Fire Exit

Café

Shop

Helpful Hounds

Voltamobility

Jowett Centre

Future Fest Reception and Careers

Bradbury Centre

Main Reception desk

Fire Exit

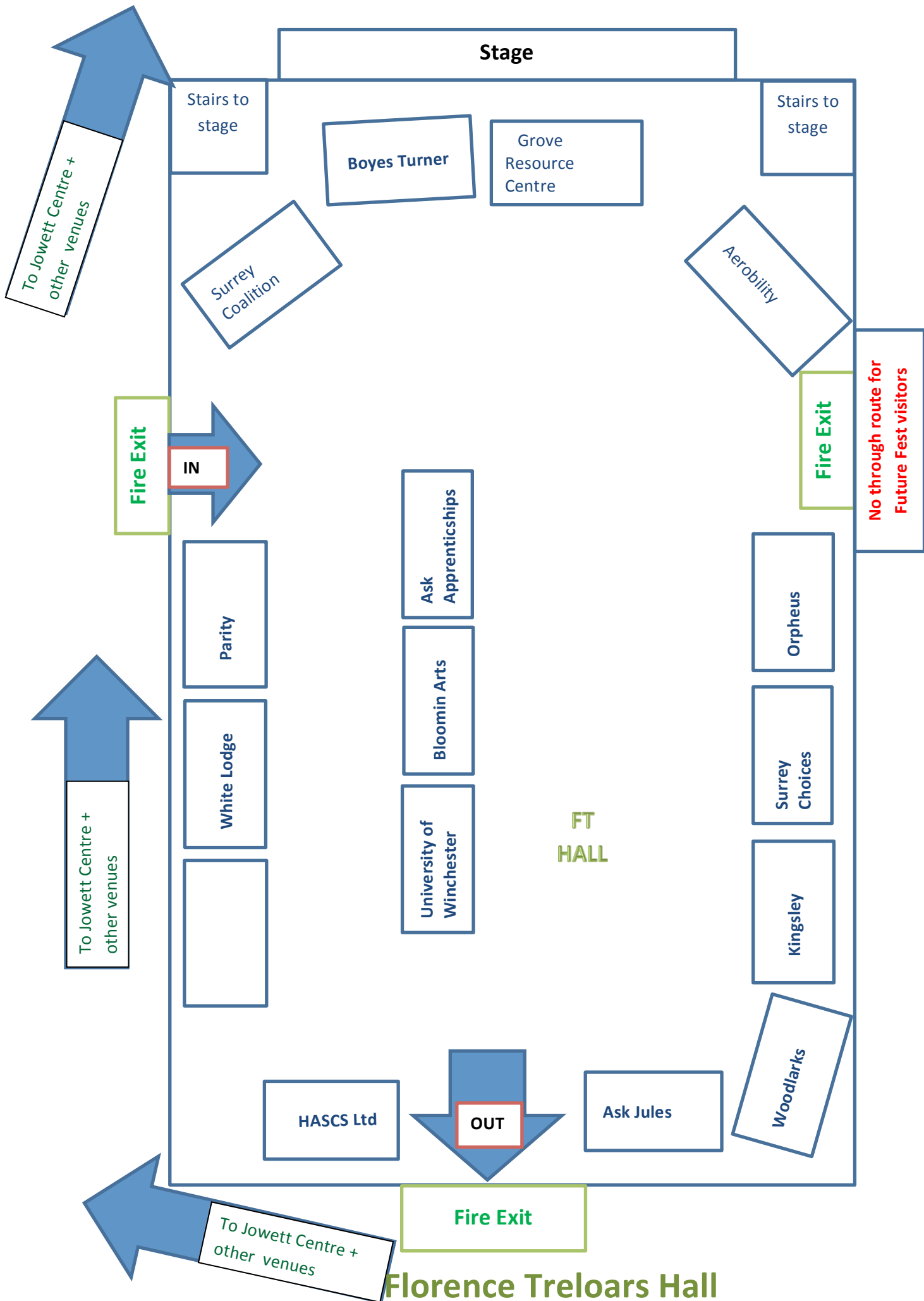
To Pike Hall

Main Entrance

Fire Exit

To FT Hall

Exit to Car park & Social Club



Active Care Group

Active Care Group is the UK's leading provider of Complex-Care services. We have over 30 years of specialist knowledge and experience of managing complex conditions. Our vision is to make a difference; to enable people to reach their potential enjoying full and rewarding lives. We use an innovative, holistic, and user-centred approach which enables us to help individuals progress towards a more independent future and to lead their best life.



Our core values of being Caring, Honest, Proactive and Empowering are engrained in everything we do. By providing a seamless and personalised package of care that reflects the users wishes hopes and expectations, we are able to look after the whole person, and that includes their personal, social and emotional needs. By empowering people to live more independently and to feel happy and safe, we are not only improving their quality of life, but those around them too.

activecaregroup.co.uk

Aerobility

Aerobility is a UK charity that changes lives by providing the disabled community access to the magic and wonder of flight. We do this because taking the controls of an aircraft drivers a focus on capability. This makes everything else in life feel that little bit more achievable, whilst offering the ultimate feeling of freedom and escape from restrictions of disability.

www.aerobility.com

Ask- Amazing Apprenticeships

Amazing Apprenticeships is a leading organisation in the education sector, working with schools, colleges and employers, tackling misconceptions and promoting the benefits of apprenticeships and technical education.

As experts on apprenticeships and technical education, we influence the way that apprenticeships are perceived and drive forward innovative and creative work in England and internationally, to ensure that more individuals and businesses can access the benefits of apprenticeships. We have already brought about a huge culture change amongst schools in the way that apprenticeships are perceived and promoted to students, but there is always more to do!



www.amazingappreniceships.com

Ask Jules

Ask Jules have been working with Treloar's since 2013 supporting students to make the transition to living independently at university whilst enjoying a full university experience. We specialise in negotiating with Local Authorities and NHS ICB's to obtain the best budgets for our clients, managing & supporting young disabled adults to run their personal budgets, and managing and supporting our clients to recruit and employ a team of compatible PAs to provide their care and support needs and academic support.



<https://www.askjules.co.uk/>

Bloomin' Arts

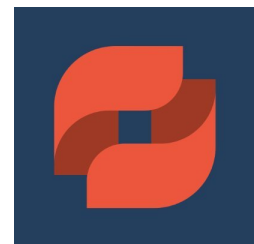
Bloomin' Arts offers creative arts courses to learning disabled, physically disabled and neurodiverse adults. A fun, friendly and relaxed place where you can explore and develop your skills and love of the theatre, dance and visual arts.

www.bloominarts.org.uk



Boyes Turner

Boyes Turner is a leading firm with expertise in special educational needs (SEN). We provide SEN advice to parents, other solicitors, case managers and other professionals. We offer as much assistance as you need. We can take over dealings with the local authority entirely, including challenges the local authority's decision by appealing to the Special Educational Needs and Disability Tribunal (SENDIST) where we can provide full representation, or, we can quietly provide special educational needs (SEN) advice in the background.



to

<https://www.boyesturner.com/>

Chailey Heritage Foundation

Chailey Heritage Foundation provides education and care services and is one of the UK's leading centres for children and young people with complex neurodisabilities. Most of the young people accessing our services have severe cerebral palsy, many have visual and/or other sensory impairments. All are wheelchair users and very few have verbal communication. Our expertise is in maximising independence and choice, developing effective communication and providing powered mobility opportunities.



<https://www.chf.org.uk/>

County Care Independent Living Limited

Providing high-quality support services for people with learning disabilities and autism in Surrey, Hampshire and Lincolnshire. Across our services, we value the importance of people being supported and encouraged to participate in a wide range of activities. Staff ensure that those we support enjoy full and active lifestyles, helping to increase social inclusion and to make sure that the people we support have full access to the community resources, events and activities available. This in turn improves health and wellbeing and gives people the opportunity to strengthen their social networks and develop their confidence and life skills.

www.countycare.co.uk

Cream Care

Cream is designed around people with complex needs who require a tremendous amount of care and support to meet these needs. The people our services provide a home for often have severe or profound learning disabilities and high care needs. Each of our homes has character and charm and they have been individually customised to meet and exceed compliance with Care Quality Commission (CQC).



www.creamcare.co.uk

Cygnets Social Care

Cygnets was established in 1988. Since then, we have developed a wide range of health and social care services for young people and adults with mental health needs, acquired brain injuries, eating disorders, autism and learning disabilities within the UK.

www.cygnetsgroup.com/social-care-services

Dolphin Homes

Dolphin Homes is a provider of care services to people with learning and/or physical difficulties and specialising in the care for people with complex health needs. We operate from 14 separate locations, all of which are registered with the Care Quality Commission. Our sister company Dolphin Care also operates a Nursing facility for people with an Acquired Brain Injury.



<https://www.dolphinhomes.co.uk/>

Enham Trust

Enham Trust is a disability charity based in Hampshire that supports disabled people to **live, work and enjoy life to the full, as independently as possible**. Throughout our more than 100 year history we have provided vital care and support to over 250,000 disabled individuals with wide ranging physical and learning disabilities.

www.enhamtrust.org.uk



Fonthill House

Fonthill House is a purpose built 64-bedroom care home in St Albans, Hertfordshire with a unique and revolutionary ethos. Family-owned and family-run, we have a passion for care and believe that all our residents deserve the best of everything. We are a home for anyone over the age of who requires nursing or residential care, long or short stay. The Fonthill nurses and therapists are experienced in caring for people with the most complex of health needs, and in anticipating changing health needs and unpredictable conditions.

<https://www.fonthillcare.co.uk/>



18

Hamberley Neurocare

Hamberley Neurocare supports people living with complex neurological conditions, brain and spinal injuries, stroke, early-onset dementia and progressive neurological conditions. At our neurorehabilitation services in Basingstoke, Camberley and Southampton, we support adults of all ages with specialist neurorehabilitation and complex nursing care. At Hamberley Neurocare, we place the people we support at the heart of our service and shape our specialist care and rehabilitation around their unique needs.

www.hamberleyneurocare.co.uk



HASCS Ltd

HASCS was founded in 2017, born with the vision to create a truly nurse-led service. We provide care for people of all ages living with spinal injuries, physical disabilities and life-limiting conditions with a complex care plan tailored specifically for their care needs and personal preferences. We place our core values at the heart of the work we do, from our health care assistants and nurses to our head office function. This one team approach ensures that every aspect of our service is aligned.

www.hascs.co.uk

Helpful Hounds

Helpful Hounds is dedicated to training Assistance Dogs for:

Young people who are physically disabled, have Autism, Down's Syndrome, PTSD, or other emotional issues.

Adults that are living with similar conditions

Schools and colleges that are Special Needs or have Special Needs Departments or Students.

Alternative Provision to motivate Children to become engaged in education subjects as well as increasing their confidence, socially and within new environments.

Our experienced Training Team use force free, positive and kind training methods in order create a strong bond for future partnerships, which, in turn, will be life changing for the young people and their families.

Each of our Training Staff have experience with working with Autism and/or SEN, and have Enhanced DBS, Child Safeguarding Qualifications as well as Mental First Aid.

www.helpfulhounds.org.uk



Home from Home Care

Home from Home's specialist residential learning disability services are continuously evolving to meet the complex needs of individuals requiring bespoke service. Our uncompromising approach, ongoing investment and commitment to a sustainable future are reflected by our dedicated colleague teams and high quality therapeutic services. We carefully design and build environments that meet each individual's needs and facilitate the delivery of their person focused care and support.

<https://www.homefromhomecare.com/>



a

Kingsley Organisation

Kingsley Organisation supports disabled adults and provides opportunities for personal development, education, training and independence. We do this through the provision of person centred day opportunities. We offer learning activities and training, enabling people to achieve their personal goals, along with counselling and emotional support. We also provide volunteering placements and training in work and employment skills.

<https://kingsleycentre.org.uk/>



Liaise

Liaise offers a comprehensive range of specialist support services for people with complex needs and specialist conditions. Our values reflect our commitment to delivering high quality support services and ensuring the happiness and well-being of all we support. We continuously strive to uphold our vision, purpose and values so that people with support needs are ensured the inclusion and dignity they deserve.



<https://liaise.com/>

Mysa Care

Mysa Care has been providing high quality individualised care and support to adults with learning disabilities, physical disabilities and autism for more than twenty years.

We have learnt to adapt and innovate to get the best results for the people we support and our staff teams.

Our highly skilled teams have one aim, life changing experiences for the people we support.

www.mysacare.co.uk

Oakleaf (Part of the Caretech Group)

Oakleaf offer a range of specialist services designed to meet the needs of adult males with complex neurological conditions and brain injury. All services are supported by our highly skilled and experienced multi-disciplinary team providing a flexible and seamless rehabilitation pathway.

<https://www.caretech-uk.com/our-services/adults-services/acquired-brain-injury/rehabilitation-hospital-acquired-brain-injury/oakleaf>

Parity for Disability

Parity for Disability's services open up a world of opportunities for people with multiple disabilities. The charity's mission is: excellence in services and support for people with multiple disabilities, their families and carers. We provide the vital tools that people with multiple disabilities need to shape activities, build friendships and relationships, expand their horizons, address mental, emotional and physical health, contribute to their community – in fact, do what everyone else is doing.



<https://parityfordisability.org.uk/>

Precious Homes

We support people to live as independently as possible, with support tailored to their needs. Everybody is unique and has their own choices, preferences and support needs. We work with each person we support to create tailored support plans that empower personal choice and support people to achieve their individual goals.

www.precious-homes.co.uk

Royal Hospital for Neuro-disability

Haberdashers House is our unit specifically designed to meet the needs of young adults. With 24 hour nursing care, staff are able to support the most complex of health needs. The focus is on fun and inclusive, client centred activities both within Haberdashers, the wider RHN facilities and the community.

Our activity coordinators make sure that each day is filled with activities designed with our young adults in mind – from pampering and chill out time to stargazing and cocktail making; no day on Haberdashers is the same as another.

In 2020 our sensory garden was completed. Furnished with rainbow pergola, water feature and raised flower beds the garden offers year round activities for our young residents.

www.rhn.org.uk



See Ability

At SeeAbility, we specialise in supporting people who have learning disabilities or autism, who may also have sight loss. Through our support, people live ambitious lives and achieve things they never thought possible, whether that's forming more friendships and relationships, enjoying new experiences and activities or finding employment.

We encourage people with disabilities to challenge what they expect from life, from themselves and from wider society.

www.seeability.org

SEE ABILITY
Live. Love. Thrive. Belong.



Surrey Choices

Surrey Choices was founded on the principle of supporting people with a variety of needs to live a life of their choosing. Our guiding belief is that we enable people to live active lives in their communities in ways that they choose, and that remains our approach today.

Our support takes many forms, and extends across an array of settings, whether that be at home and or day support settings, or in the community. Wherever our services are delivered we strive to do our best for those they support.

www.surreychoices.com

Surrey Coalition

The Surrey Coalition is run and managed by Disabled people for Disabled people.

We enable and empower Disabled people and those living with a long-term health condition to be an active and central part of the community.

We proactively work with health, social care and community partners to co-produce services, strategies and policy.

We campaign for choice and control to achieve our legal rights and entitlements. We identify and respond to gaps in support to meet the needs of Disabled people. We spotlight, celebrate and champion equity, diversity and inclusion.



[Getting Involved - Surrey Coalition of Disabled People](#)

The Grove Resource Centre, Voyage care

At The Grove Resource Centre, we provide support for people aged 17 and over with learning disabilities and associated needs. Our support is person-centred and tailored to each individual, ensuring they have meaningful, fun-filled experiences at our service.

Our enthusiastic team ensures everyone who visits enjoys a variety of sessions and social interaction, with many special events happening throughout the year

The Orpheus Centre

The Orpheus Centre is a charity and college which supports young disabled adults aged 18-25 to learn essential life skills, gain formal qualifications and prepare for future employment.



www.orpheus.org.uk

The Woodlarks Centre.

The Woodlarks Centre is an exceptional care home and activity centre situated in a beautiful location on the outskirts of Farnham. Our mission is to provide the highest quality of care and support for people with a range of disabilities, in a warm and stimulating environment

www.thewoodlarkscentre.org

University of Winchester

The University of Winchester is a values-driven organisation with a deep commitment to teaching and research excellence. We offer a range of courses relating to the Arts, Business, Law, Digital Technologies, Health and Wellbeing, Education, Humanities and Social Sciences. We are committed to improving access for disabled students to all aspects of student life and have a team of Disability Advisers offering support and guidance.



<https://winchester.ac.uk/>

United Response

United Response is a national charity that prides itself on delivering a high level of support to adults with a wide range of disabilities, including learning difficulty, mental health needs and autism. We provide different levels of support such as Residential care, Supported living services and Outreach support. As well as delivering person centred support, we offer engaging activities in the many activities hubs we have across the nation.



<http://www.unitedresponse.org.uk> <https://www.facebook.com/URichmondkingston>

Volta Mobility

Volta Mobility offers a variety of Wheelchair Accessible Vehicles. A converted vehicle is the perfect solution for wheelchair users to access the rear or front of a vehicle with ease. When converting a regular or electric vehicle into a WAV or UpFront vehicle, we install a lowered floor to create more interior space for the wheelchair user. All our conversions come with a foldable ramp to enable wheelchair users to easily enter and exit the vehicle.

<https://voltamobility.co.uk/>



White Lodge Centre

White Lodge provides services that enable those with a range of disabilities, their families and carers to lead fulfilling lives. We are based on a wonderful two acre site in Chertsey in three specialist buildings with great facilities and services for all ages, including: physiotherapy, occupational therapy, speech and language therapy, a specialist nursery, hydrotherapy, holiday clubs, personal support in the home, short breaks (respite), fitness and rehabilitation and many activities such as trips out, art, baking, swimming, and much more.

<https://www.whitelodgecentre.co.uk/>





Support from Treloar's

Careers Advice

Our Careers advisor Erin Wills will be available at Future Fest to discuss how students' can access support after leaving, as well as providing information about the support available to them during the transition process.

Dietetic Support

During their time at Treloar's, all students are under the care of the Treloar's dietitians. After leaving, some students will have ongoing care provided to them by NHS dietitians, however others may no longer have access to a dietitian. Nutritional requirements can change over time and will likely change after leaving Treloar's due to such things as new routines, a new placement, changes to health etc.

Treloar's dietitians will be available at Future Fest to discuss how students' nutritional intake and weight can continue to be monitored after leaving, as well as providing information about the support available to them during the transition process.

Thank you for attending this years' Future Fest event.

We hope that the you found your visit informative.

If you require any further information regarding future placement opportunities please contact our Progress and Transition team on

TransitionTeam@treloar.org.uk