

Our year in action

For the year ended
31 August 2025



Our Vision

A world where physically disabled young people take control of their lives and achieve their aspirations

Our Mission

To enable physically disabled young people to achieve their aspirations by:

- Providing personalised learning, therapy and care
- Supporting transition into adulthood
- Promoting independence and inclusion

Our Values



We are Inclusive

Everyone – regardless of physical ability, where they live or socioeconomic background – should have the opportunity to take part in life. We treat our beneficiaries with the same dignity as their non-disabled peers, and work to remove barriers in their way.

Our students and beneficiaries are always at the centre of everything we do. Before we make decisions, we ask: “How will our students and beneficiaries benefit from this?”

We act with Integrity and Respect

Physically disabled young people should be free to direct their own lives. We listen to young people’s views and support them to make age-appropriate choices about their daily life and informed choices about their future.

We celebrate and promote diversity, value and support each other, and treat everyone with mutual respect. We support a culture of openness, honesty and transparency, where the safeguarding of our students and wellbeing of our staff is paramount.

We strive for Excellence

Physically disabled young people and their families deserve outstanding care and support. We work to make sure all our services are excellent, and actively challenge each other to ensure continuous quality improvement.

We continually innovate to ensure that our beneficiaries receive the cutting-edge support they deserve.

We strive to ensure that our school and college develop and evolve with the needs and potential of our students, but we also want to take the message of inclusivity to a wider audience, sharing our experience and expertise outside Treloar’s for the benefit of more disabled people.



Strategic objectives 2022-2027

We will...

1. Further our excellence as a school and college for physically disabled young people

- Meet student needs by continually developing our education and life skills programmes
- Support students to successfully move on from school and college
- Widen access for students from underrepresented backgrounds and communities

2. Maintain our specialism in supporting children and young people with higher levels of need in education

- Continue to foster our excellence in healthcare, residential care and therapy
- Pioneer the practical application of assistive technology to further develop the independence and potential of disabled people
- Develop and demonstrate innovation

3. Contribute on a wider scale to the education and support of physically disabled young people

- Work in partnership with local authorities and other education, health and social care providers to support SEND and care objectives across the system
- Amplify the voice of disabled children, young people, parents, carers and families to support change in society

What our students say

"The staff are amazing, I feel included in everything. I made lots of friends. I learn a lot, It's really fun."

"I am encouraged to make my own choices."

"The staff are all very friendly and happy to help. I love being able to socialise with my friends."

"Everything is accessible to me."

"I love socialising and friendships."

"You learn a lot and it is very inclusive."



Welcome

Welcome to Treloar's 'Our year in action' report. I hope as you read it, you can see the difference your support has made over the last year.

Starting at Treloar's has been brilliant. I've never had the chance to do so much before, and for the first time I feel like I can really take part and make my own choices.

The biggest change has been finding my people. I finally feel like I'm in the right place, with a group where everyone is equal and supports each other. It's made such a difference after feeling like I didn't quite fit before.

The support here is amazing. I can express myself more easily, and I feel safe, understood and encouraged. Staying overnight here has also given me the chance to try so many new things - from activities in the evenings to just spending time with my friends, which I really enjoy.

This is the first time I've stayed away from home, and I love having my own space and independence, while still having the right support around me.

Most importantly, I feel happy, confident, and like I belong.

Brandon,
Treloar College student



What parents and carers say

"My child is learning to be independent which she was never before, and she loves the opportunity to go on trips and days out."

College parent

"For my daughter, it has been the fostering of independence and the support to manage her emotions. While at the same time providing a safe and positive environment for living and learning."

College parent

"It is very hard to pick the best thing about Treloar's, but I think as a parent it is the knowledge that your son/daughter is getting the best care and support possible and the opportunity to become the best person they can be."

College parent

"The best thing by far is the integrated, thoughtful and holistic approach to education and care. It would be easy to pay lip service to multi-disciplinary co-ordination but this really does happen at Treloar's and it has great benefits for our child."

School parent

"My child has been at Treloar's for approx. 18 months and the positive changes in behaviour, understanding, speech, and learning has been immense."

School parent



About Treloar's

Treloar's is a charity which runs one of the UK's largest specialist education centres for young disabled people to live and learn. Through our school and college, we offer students the opportunity to fully take part in life and achieve their aspirations.

We support around 180 children and young people, aged 4 to 25 years, who come from across the country. All of our students are physically disabled, many with complex clinical needs and a sensory impairment. Our highly specialist staff deliver outstanding education, therapy and care for our students. But we need your support to do so much more.

We need to raise £2 million every year, in addition to the funding we receive from Local Authorities.

Your donations help us keep pace with the increasingly complex medical and care needs of our students and provides them with access to specialist staff, accommodation and equipment to unlock their potential and enable them to live a fulfilling life.

About our students

100% of our students are wheelchair users

60% of our students are non-verbal or require support from communication aids

37% of our students have a visual impairment

58% of our students have a life-limiting condition

63% have cerebral palsy

8% have muscular dystrophy

School highlights

- Strengthened literacy and maths frameworks, ensuring every student accesses a purposeful, relevant and highly personalised curriculum tailored to individual needs.
- Deepened strategic partnerships with Eggar's School and Alton College, significantly expanding GCSE pathways and progression opportunities, with clear and growing student impact.
- Joined Challenge Partners "Growing the Top", externally validating Treloar's as sector-leading while strengthening school improvement through collaboration and challenge.
- Delivered a significant uplift in student progress in 2024/25, with more students meeting or exceeding expectations, reflecting the impact of our personalised curriculum and integrated therapy, and multi-disciplinary approach.
- National winners of the NASS "Breaking Barriers" Award, recognising exceptional impact in inclusion, student voice and community engagement through Dance Live.
- Outstanding sporting success at national level, including gold and silver medals in boccia and progression to the Heathcoat Cup Finals, with students competing at an elite standard.
- Innovative staff development initiatives embedded across the school, including "Like It, Try It" and "I Am Awesome", alongside research-informed work to develop a new Teaching and Learning framework, strengthening professional growth and classroom impact.

College achievements

- Every college student had the opportunity to visit Woodlarks Accessible Campsite for outdoor adventures and team building fun.
- Seven Supported Internship students graduated from the programme with valuable employability skills, ready to take the next step in their careers.
- 'Treloar's Got Talent' is a highlight of the college calendar, with a record number of entries, showcasing music, dance, drama and comedy.
- 'Let Me In' student-led enterprise, has gone from strength to strength, receiving widespread recognition, including features on BBC South Today and BBC Radio Solent, and being formally recognised by The Rt Hon Baroness Jacqui Smith, Minister for Skills.
- We held our first-ever organisation-wide Job Shop, which brought together all departments to showcase the work they do and offer students work experience opportunities.
- Treloar College hosted the Natspec Games, a wonderful event that brings together students from specialist colleges across the region to celebrate accessible sports.
- Treloar's Fest was a vibrant, student-led summer festival, a celebration of music, food and community.

Reggie's story

Reggie was born at just 35 weeks. He was tiny and his parents noticed he was having trouble breathing. He was diagnosed with Tracheo-Esophageal Fistula and had surgery later that day. Whilst recovering in the ICU he developed jaundice, which led to cerebral palsy and profound hearing loss. The early years were tough for the family.

As he grew, Reggie's parents were keen to find the right school, where he would learn and grow and truly belong. His parents searched for a school that could recognise the boy, beyond his diagnoses. Dad, Nicholas remembers "Treloar's stepped in and really supported us."

"We just knew straight away this was the place for Reggie," says Mum, Kathryn.

Reggie joined in Reception class, a happy smiley boy, at this stage he was just starting to join a couple of words together.

"He is now speaking in sentences, the range of words that he can say and understand has really developed. He now has a communication device that he controls with his hands. **He's just made massive progress.**" Gemma - Speech and language therapist.

Reggie loves school. There's an incredible support team at Treloar's, and everyone's helped him develop his confidence. Dad Nicholas highlights being able to access music lessons: **"He's developed a huge passion."**



"We just knew straight away this was the place for Reggie" says Mum, Kathryn

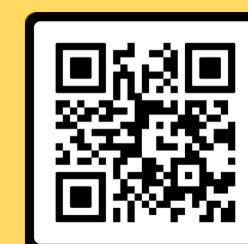
He can access a wide range of activities, that he wouldn't have been able to access before, because of how he's grown in his confidence and communication skills.

Reggie has learnt to drive his power chair which helps massively with his independence. Therapy is fully integrated throughout the curriculum in lesson time, including swimming and hydrotherapy once a week.

"It's incredibly powerful watching a child grow into everything they're capable of." Gemma - Speech and language therapist.

For Reggie's family, the impact has been life changing. Nicholas sums up the difference Treloar's has made to family life: "It's given us confidence in what can be achieved, it's allowed us to be parents again."

Scan the QR code to watch Reggie's film on YouTube.



Reggie



Thanks to our donors and supporters

With thanks to our incredible community, together we have raised over £1.8 million to support Treloar's students

This year's fundraising achievements have been made possible by the extraordinary generosity and dedication of everyone who supports Treloar's, and we extend our heartfelt thanks to each and every one of you.

Your support has enabled us to say 'yes' when others say 'no', making a real difference to students, their families and disabled people across the country.

We are grateful to those who sell out our gala dinner, bring our London events to life, and to our wonderful community supporters behind Dummer Fair and our annual Friends of Treloar's Plant Sale, led by volunteer committees who give so much.

We also thank the individuals who run marathons, bake cakes, hold quizzes, take on personal challenges and much more, alongside our local government partners and the grant giving trusts and foundations whose belief in our work is vital.

Together with our valued livery connections and growing business partnerships, you ensure our families

know they are supported by a community that truly cares.

Kicking inclusion into play!

This year, we proudly celebrated a major milestone with our long-standing partner, Exclusive Networks, whose support has now exceeded an incredible £100,000.

Our business partnerships are about far more than funding alone. Our Partnership with Exclusive Networks is backed by so much more than financial generosity, including event support, volunteering on site and work experience and mentoring opportunities for our students. We were also delighted to be the charity beneficiary of the annual Exclusive Networks charity football match.

Complete with press passes, our college students took over the media coverage on match day, interviewing and photographing 30 leading technology businesses as they competed for the coveted cup. Treloar's even entered its own staff team (sadly, we were outplayed on the day!)

Playful spaces

In February, we opened our new soft play space, designed to improve physical development, confidence and well-being for both school and college students. The bespoke space allows students to leave their wheelchairs, move freely and socialise safely, supporting the development of gross motor skills, spatial awareness and social interaction. Carefully designed equipment and accessibility features such as hoists, ensures physically disabled students can take part fully, building confidence and self-esteem, while additional sensory features support students with sensory processing needs. This accessible, age-appropriate space is already making a measurable difference to student well-being and participation, made possible entirely through the generosity of you, our supporters.

Royal recognition

The support of our Royal Patron continues to play an important role in highlighting the work of Treloar's and the achievements of our students. HRH The Duchess of Edinburgh's visit in 2025 was a particularly special moment for our community. Students were delighted to meet her, taking great pride in sharing their experiences and showcasing their work.

During her visit, Her Royal Highness also recognised how vital our supporters are, acknowledging the difference your generosity makes to the lives of our students every day.



Expanding Learning opportunities

This year we officially opened the new Bradbury Learning Centre, thanks to your generous support, and it is already transforming how students learn.

One example is our new eSports qualification, where students are developing confidence, leadership and employability skills through competitive gaming. This year, Key Stage 4 eSports students put their learning into practice by designing and leading a school wide eSports competition, delivering two highly competitive tournaments for students and staff.

Building on their visit to EA Sports, students took full ownership, planning

the events, communicating clearly, making decisions under pressure and demonstrating excellent digital skills. Alongside immersive learning, assistive technology and inclusive play, the Bradbury Learning Centre is giving students opportunities to compete on a level playing field and build independence, with many now preparing for a summer term competition reaching beyond Treloar's.

The Bradbury Learning Centre, was funded by charitable trusts (including the Bradbury Foundation and Constable Educational Trust), individuals and East Hampshire District Council.



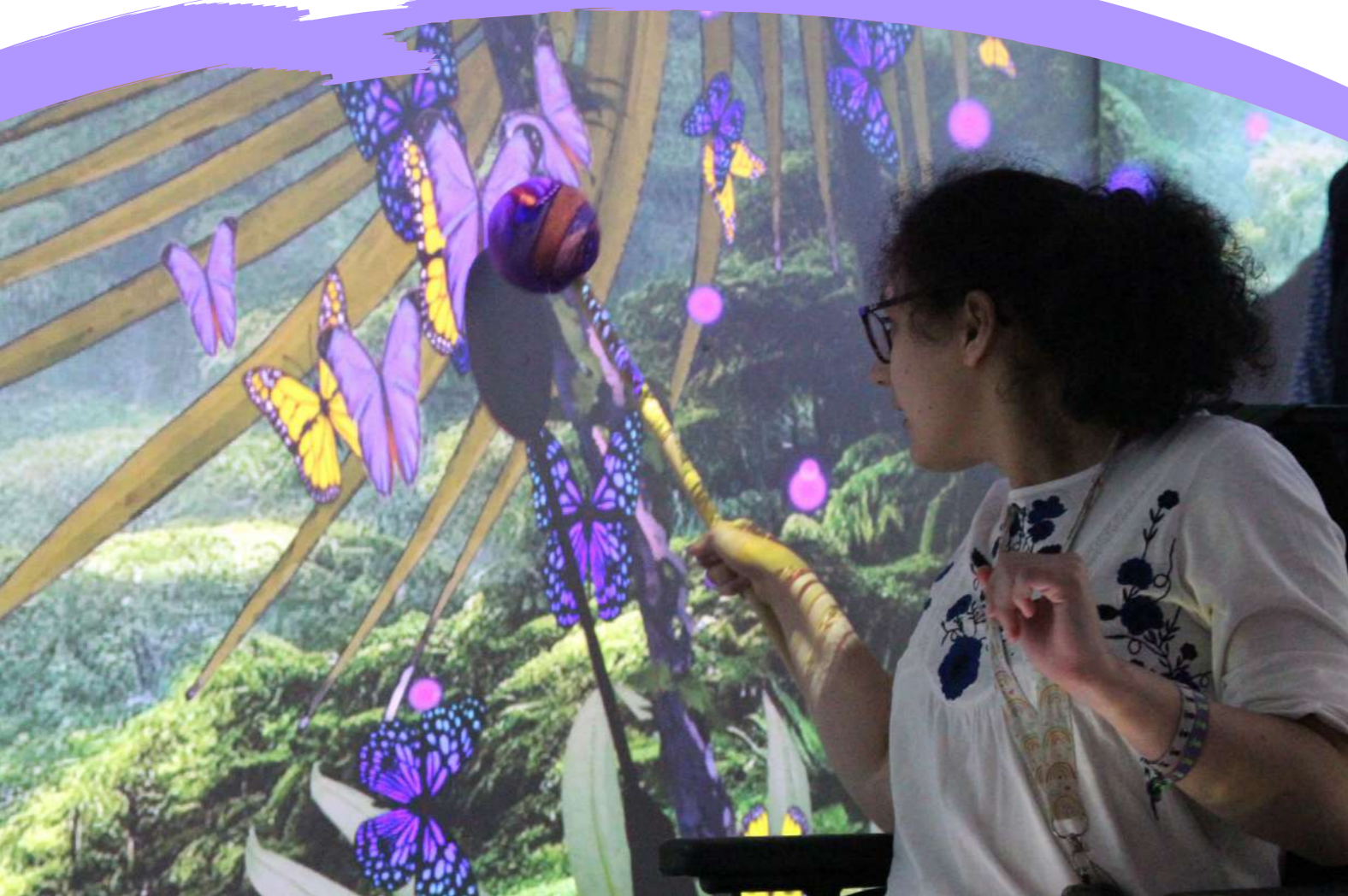
Students fly high with supported internships

While fundraising supports many wonderful projects and specialist pieces of equipment every day, general donations are what allow Treloar's to respond quickly and effectively to changing needs. Your everyday gifts give us the flexibility to act, adapt and ensure no student misses out on the support they need.

Flexible funding plays a vital role in our transition programme, helping young people prepare for life beyond Treloar's with confidence and independence. Through personalised planning, skills development and work experience, students are supported to move into adulthood, employment, further learning, independent living or supported internships.

Cameron and Ben

College students Cameron and Ben joined the Southampton Airport team as part of Treloar's Supported Internship Programme, a one-year pathway designed to support students into employment, self-employment or voluntary work. Throughout the academic year, they focused on improving passenger experience, beginning with a comprehensive induction that included meeting senior leaders, the accessibility team and completing essential safety training. Cameron and Ben tested accessibility across the train station and car park and met staff across the airport. They identified ways to improve the experience for both passengers and staff, supporting Southampton Airport's commitment to creating more accessible communities.



Archie

“When I started at Treloar’s I dreamt of having a job one day but didn’t know how to make it a reality. I didn’t know how people would see my skills before judging me by my disability first. I also didn’t know what support employers could offer me and how I would organise the help I needed. It seemed like too big a mountain to climb.

“I now live in a supported living community where I run the local radio station and have some freelance video editing work.”

Archie is also an active member of the local gardening club, growing his own produce, and keeps active through archery and boccia.



James

James is the latest Treloar College student to join the National Open Youth Orchestra, playing the Clarion. The Clarion offers new and inclusive ways of making music and performing. James learnt to play Clarion in music lessons at Treloar’s.

Clarion is the first accessible instrument that offers access to students who would otherwise be unable to play an instrument due to physical limitations.

James says playing with an orchestra “has always been my dream”. He is looking forwards to playing in his first concert with NOYO in June 2026.



Alex

Alex joined Treloar’s in 2020, just after she had received a new communication device. Alex spent lots of time getting to know her new communication programme and learning where all the vocabulary was stored.

Starting at Treloar’s she was super motivated to make the technology work for her and loved being a part of a community with other young people who use AAC (Augmentative and Alternative Communication). Since then Alex has really developed her confidence, her conversation skills and is so much more fluent now.

“My communication device has changed my life, I used to feel lonely and frustrated, but my Accent device helps me express myself and have more independence.”



Aish’s story

Aish has quadriplegic cerebral palsy. Complications during birth changed the course of her life and that of her family in an instant. The early years were challenging, as her parents came to terms with what lay ahead and learned how to move forward together.

At mainstream primary school, Aish faced significant barriers. Although she was eager to learn, she had no reliable way to communicate. “In her brain, she wants to learn,” says her mum, Debs, “but her body wouldn’t support her.” Socially isolated and limited by complex health needs, it became clear that Aish required a specialist environment for secondary education.

Treloar’s was recommended by a therapist. From their very first visit, something felt different. “We brought her once and she just never looked back,” Debs recalls. “Aish knew, in her heart that Treloar’s was the place she wanted to be.”

Now in Treloar School’s sixth form, Aish is thriving. Her tutor Hannah says: “She comes in everyday with light.” With the

support of a skilled, multidisciplinary team, Aish has grown in confidence, independence, and self-belief.

Mum Debs says: **“We see a huge change from when she joined to where she is today.”**

Aish has a residential placement and stays at Gloucester House, where she is learning to be more independent which will help her in her future. While she will always need respiratory support, she is developing her ability to advocate for herself through assistive technology. She has also gained a deeper understanding of her personal care routines and is learning how to direct others to meet her needs.

Socially, Aish’s world has expanded. She has formed genuine friendships with peers who communicate with her, include her, and encourage her to take part in everything.


“Our lives have been transformed thanks to Treloar’s.” says Debs.

Aish puts it best herself: **“Treloar’s has helped me become who I want to be.”**



Scan the QR code to watch Aish’s film on YouTube.



 Aish

Treloar's ran
714
in-person
staff training
courses in over
200 different
subjects.



91%
of college
students
say they are learning
skills that will support
independence after
leaving Treloar's.



**"The
multidisciplinary
approach to
health and
well-being is
exemplary."**
Ofsted residential
inspection 2025



Our specially trained staff
administered
317,724
doses of
medication
this year



**"A truly fantastic
school for my
child to attend."**
School parent



147
students
completed
4316
hours of work
experience

**"Students are
empowered by
staff to understand
that their views
are important and
that they can effect
change."**
Ofsted residential
inspection 2024



**Student support
assistants
are trained in
60+ delegable
clinical skills by
our specialist
nursing team.**



**"My daughter has
had the most
fantastic first
year at Treloar's.
She is the
happiest she has
ever been."**
School parent



**14 school, 20 college
council members,
and 10 Alton College
Student Forum
representatives
helped us make
decisions.**



The counselling
team hosted
1183
appointments
offering music therapy, art
therapy and counselling.



**"The residential
setting provides
a happy, vibrant
and inclusive
atmosphere."**
Ofsted residential
inspection 2025



Financial summary

In 2024/25 Treloar's showed a net deficit of £143k (2024: £232k), before actuarial gains on the defined benefit scheme of £756k, (2024: £88k) on a turnover of £32.3m (2024: £30.6m).

A modest price rise together with a small growth in student numbers by 1 to 172, and a growth in complexity, offset by fewer boarders at the start of 24/25 helped increase income from charitable activities by 6.0% to £29.6m (2024: £27.9m).

Donations and legacies fell by 14.0% to £1.35m (2024: £1.57m), reflecting a gap between major appeals and a more challenging fundraising environment. In addition, Event income declined slightly to £253k (2024: £280k), reflecting the movement of a Summer event beyond the year end and contributions to other fundraising activities softened to £448k (2024: £489k). Overall fundraising raised £1.80m (2024: £2.06m).

Although income was up this was mostly offset by inflationary pressures and a full staffing compliment pushed expenditure up by 5.1% to £33.0m (2024: £31.4m).

The 2025 gain on investments of £507k compared favourably to a £491k gain in 2024 thanks mostly to unrealised property revaluations of £391k. Further actuarial gains arose on the Defined Benefit Pension Scheme of £756k (2024: £88k) contributing to an overall increase in the charity's funds of £682k (2024: £144k reduction).

Balance sheet and cash flow highlights include a small (1.4%) reduction in Tangible fixed assets and a 3.3% reduction in investments to fund the operating requirements of the School and College. Increases in both debtors and creditors reflected more autumn term invoices being billed before, but not settled by the 31st August. In addition, an increase in provisions reflects greater medical complexity and extended

decision making within local authorities, potentially impacting invoice settlement. General reserves have increased marginally to £2.73m (£2.44m) and Net assets at the year end were also higher at £29.7m (2024: £29.1m).

General reserves are deemed to be those that are readily realisable less funds whose use is restricted or designated for a particular purpose. Thus, the calculation of general reserves excludes property and other fixed assets that continue to be used in the day-to-day operation of Treloar's and in particular the buildings used by the school and college.

The Designated fund primarily represents the net book value of tangible fixed assets, which have been purchased with unrestricted funds. This reserve is locked into the value of the estate and can be released only if all or part of the estate is sold. The value of the fund fell during the year to £19.9m (2024: £20.5m) reflecting a gap between major capital projects.

Restricted funds of £9.7m (2024: £10.0m) represent monies received for a restricted purpose with the vast majority of these funds linked to specific building appeals of £8.96m (2024: £8.83m). Endowed funds of £1.64m (2024: £1.62m) are made up of the Rossington Fund £958k (2024: £942k) and Billesden Fund £686k (2024: £676k) and are applied to help students access education and to help monitor and support alumni progress respectively.

The historic Defined Benefit Pension scheme fund deficit relates to the excess of liabilities over assets in the defined benefit scheme. In 2024/25 the value of assets decreased by £1.29m to £20.5m

and this was more than offset by the total of future obligations decreasing by £2.42m to £24.75m. Overall, the net deficit reduced to £4.27m (2024: £5.41m).

The Trustees regularly review the value of the reserves required to be held in investments, cash and cash equivalents not restricted to or designated for any particular purpose. Ideally the Trustees believe that a general reserve of 3 months expenditure is needed to provide adequate working capital, to create a buffer in case of a sudden reduction in student numbers and to allow for fluctuations in investment returns. At 31 August 2025, the General Reserve was £2.73m (2024: £2.44m). Whilst improved, this figure remains lower than the reserve level targeted by Trustees even when long term finance is factored in. However, the Trustees consider this level of general reserves to be adequate at this time.

Where the money came from in 2024/25 (£000s)

Fee income College	£18,158
Fee income School	£11,003
Donations, legacies and grants	£1,351
Lottery and events	£448
Other income	£433
Independent adult living	£412
Investments	£346
Outreach services	£128
Total	£32,279

Where the money was spent in 2024/25 (£000s)

Education	£9,842
Residential	£15,237
Medical	£6,994
Fundraising	£591
Lottery and events	£265
Total	£32,929

Thank you to our Patrons

Royal patron

HRH The Duchess of Edinburgh GCVO

Fiona Adler

Michael Aspel OBE

Bob Barrett

Dan Bentley

The Rev Mark Birch

Virginia Bond

Stuart C Boreham

Lady Tessa Brewer OBE

Michael Cassidy CBE

Mike Chadwick ACA CTAI

Chris Childs

Christopher Dadson

Dan Eley

Damon de Laszlo DL

Julie Fernandez

Humphrey Hawksley

Suzanna Hext

Jane Macnabb

Maureen Marden

Alderman Sir Andrew Parmley

Robert Powell

Martin Sinclair

Admiral Sir Jock Slater GCB LVO DL

David Smith OBE

Roger Southam

Jeff Stelling

Alastair Stewart OBE

Sir Richard Stilgoe OBE DL

Tom Yendell OBE



© Max Mumby



“It’s the holistic approach to education and care and the way in which everyone works together to help individuals dream big and achieve their full potential. I am also struck by how truly inclusive it feels not just the physical environment but in the way in which everyone is valued and treated so respectfully.”

– College parent



Thank you from our trustees

Honorary trustee

Rt. Hon. The Lord Mayor of
The City of London

Trustees

**Lady Win Normington CBE Chair of
Treloar Trust (to 27/03/2026)**

**Cheryl Brewer Chair Designate (from
27/03/2026) and Chair of Governors,
Treloar School and College**

Liz Ashford (resigned 17/03/2025)

James Bateson LLB

David Cook BSc FCIM

Ian Cranna

Anna Galliford BComm ACMA

David Matthews JP BSc CA

Dr Victor Olisa QPM

(resigned 24/02/2025)

Neil Smith

Scott Watkin BEM (resigned 31/08/2025)

Jo Wright

Senior executives

Martin Ingram BSc PGCE

(Chief Executive)

Simon Birch BA MBA ACA

(Deputy Chief Executive, Finance
& Resources Director)